

DIRECTOR
Natalie
gnattrlr@gmail.com

TREASURER
Lynn
lynnmtrlr@comcast.net

MEMBERSHIP,
ROAD CAPTAIN
Dawn
dmhtrlr@comcast.net

NEWSLETTER EDITOR,
SECRETARY
Sue
suespittle@comcast.net

REGIONAL AMBASSADOR
Dawn "Paws"
mountaingrrl@mac.com



Chartered
1996

September 2022

SOUTH CENTRAL PA CHAPTER NEWS

Vol. 27 No. 9

www.twinroseladyriders.com

www.meetup.com/Twin-Rose-Lady-Riders

 **WOW: Twin Rose Lady Riders Chapter**

Greetings Roses & Friends!

I know I say it every year...but how can it possibly be September already? I guess it's true as we get older, time seems to speed up.

Our second Sunday ride in September was switched to support HOPE's Road Rally. Unfortunately, it rained that day. Thank you to the Roses who slogged out to participate. Although we didn't drive the Road Rally, we did donate almost \$100 to them that day. It's important to support all charities, but that one is near and dear to our hearts no matter the weather.

Speaking of near and dear to our hearts — our friends at York Motorcycle Club have some events coming up. Let's support them as much as possible. See the calendar.



Well, my strange summer continues. You know how I said I can't seem to get on the bike this year? After three months of planning, my motorcycle vacation was essentially cancelled. My travel companion found himself with three weeks between jobs. I couldn't deny him the opportunity to live off the bike for three weeks, but I couldn't take three weeks off work. So, after much deliberation (thank you to everyone who listened to me whingeing), I've decided to stay to my original route, but take the Jeep. It was going to be a VERY ambitious 2-week vacation, covering about 6,000 miles on the bike. Taking the Jeep allows me to enjoy it more, and since it's a solo adventure, I'll be able to explore to my heart's content. I just need to keep reminding myself that I need to be back for work, darn it. It's the first time since 2015 I haven't packed the bike up to head out, and I'm very sad about that. Fewer miles or more time — I would definitely be experiencing it on two wheels. (I promise I'll submit a newsletter, article, Sue.)

Please don't forget that the Director and Treasurer positions are up for election this year. If you know somebody who would be great at either job, or if that person is you, please contact Secretary Sue S to nominate.

Our next group ride is to Chesapeake City on Oct. 9 and Lynn will be leading us! Check the calendar page for details — and don't forget that Maryland is a helmet state. Looking forward to some riding and Chesapeake seafood!

See you soon Roses!

Natalie

Happy Birthday

NancyOctober 3

Kathy M.....October 10

Roses, if your birthday has been missed
send it (mo/day) to suespittle@comcast.net

Meets 2nd Sundays:

NOV – MAR: 11 AM brunch

**APR – OCT: Check ride
calendar or call for details
on meeting sites or specific
ride/rendezvous plans.**

Welcome Prospective Members!

Would you like to ride with an enthusiastic local WOW chapter? Call any of the names above to chat, or check our web site and events calendar and drop by a meeting point. Support Guys always welcome, too!

If you'd like to continue receiving chapter news, forward \$10 (check payable to Twin Rose Lady Riders) to the Treasurer's address above. It's an annual donation toward operating expenses.

Membership Policy:

Women On Wheels® members and guests are welcome to participate with any chapter. We encourage you to **join the nat'l organization, as WOW membership is required for continued chapter participation** and because members are protected under our insurance plan. Application forms are available in the WOW magazine or from any chapter officer.

✓ Election Time Is Here!!

Women On Wheels® requires the following:

- A Chapter Officer, regardless of the title, must be a member in 'good standing' with WOW membership dues paid.
- Sorry support guys – you may not run for office – but that does not stop you from being drafted... oh, I mean volunteered... for any and all support needed at any time day or night! :-)

Twin Rose Lady Riders Chapter of WOW®

Nominations Now Open

Feel free to nominate yourself.

Nominees will be contacted and given the opportunity to decline.

– **Submit nominations to suespittle@comcast.net by Nov 20** –

[Voting Ballot will then be printed in the November newsletter, to be turned in by Dec 20.]

Director – 2-yr. term (Jan 1, 2023 – Dec 31, 2024)

Chairs monthly Chapter meetings and 2-3 Board meetings/yr.
Stays in contact with all committees
Oversees Ride For HOPE event
Attends 3 AMA meetings/yr.
Is 2nd signature on Chapter checks
Stays in contact with WOW Nat'l

Secretary – Voluntary (Term determined by you.)

Records minutes at Chapter and Board meetings
(Must miss a meeting? Just ask someone to fill in for you.)
Forwards minutes to Newsletter Editor by 20th of month
Coordinates with Sigi who sends greeting cards

Treasurer – 2-yr. term (Jan 1, 2023 – Dec 31, 2024)

Collects/oversees TRLR funds
(dues, ad income, special collections, fundraising income, etc)
Makes deposits, balances checkbook
Obtains cashbox change for fundraising events
Sends out advertiser invoices
Pays TRLR expenses (along with 2nd signature on checks)
Annually files 501(c)(3) federal postcard
Handles application for Games of Chance license
Maintains financial records using computerized accounting program
Provides printed and verbal reports to the Chapter

A Message from WOW®

We need to know more about our demographics as we begin to create a marketing plan for Women On Wheels. We need to know who we are, what we ride, the type of riding we do... these things will help us identify how to reach out to potential members. We must reach as many new members each year as possible due to the number who naturally drift off our active rosters. Please take some time to complete our survey so we can accurately develop our marketing plan.

https://docs.google.com/forms/d/e/1FAIpQLScAWHMexRHTlpwWexi8zWVhXRHsrxwcW_RI45nsz023bmTD4g/viewform?usp=sf_link

WOW Board of Trustees is also always looking for volunteers. Please consider helping the organization the best way you can.

And, to optimize pricing, the Ride-In Search Committee is looking into a wider date range for **2024** — June 23 through July 20 — as well as which state might be most feasible. So stay tuned.



This great photo has been making the rounds of the internet. Queen Elizabeth II at age 19 learns how to ride for the WWII Auxilliary Territorial Service.
“Look where you want the bike to go.”

The pool sparkled in the sun.



H.O.P.E. Haven Open House

Sept. 24th sure was a glorious day! Trish and I drove back roads down to HOPE where the weather was perfect and a big crowd of well-wishers (including local politicians) were hugging an emotional Barb in turn.

There were refreshments and music and tours of the lovely home — so large yet so warm & cozy at the same time. It will truly be a calming “vacation from cancer”.

Our favorite part of the day was when Ed took the two of us on a wild golf cart ride around the 18 acres, but

I don't have any photos from that because I was hanging on back for dear life. We saw all the trails (some still in progress), secluded clearings for gazebos, deer feeder, cords of firewood for sale, the veterans memorial garden, a waterfall, and acres of hillside which will soon be a fantastic wildflower meadow!

There will always be the need for fundraising as well as plenty of volunteer opportunities. Here's to helping sustain Barb & Jenn's dream come true. — Sue S

When Barb's friend Jenn's sons helped cut the ribbon, there wasn't a dry eye in the crowd.



We found our bricks.

OUR GENEROUS SPONSORS

\$100,000 to \$300,000

- Kinsley Foundation
- Mid-Atlantic Women's Motorcycle Rally, Inc.
- Panera
- Fred Heffner Estate
- Beda Obrigkeit Estate

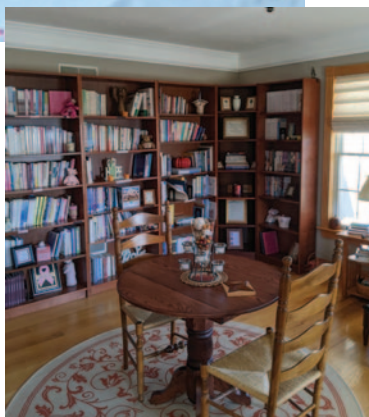
\$50,000 to \$100,000

- Twin Rose Lady Riders

\$10,000 to \$50,000

- Memorial Health Foundation
- Father Joe Carolin's Estate
- Adult Prom
- State Farm Neighborhood Assist
- Pink/Lisa Fritz, MD
- Powerhouse Generators
- J. Wm Warehime Foundation
- Donald B and Dorothy L Stabler Foundation
- Joyce Kitlas and Family
- Marty Streett and Family
- The Titanish Family
- The Rice Foundation
- The W. Dale Brougner Foundation
- The Bernard Family
- The Schroeder Family
- Glatfelter Insurance
- Visiting Angels
- CGA Law
- UPMC
- Hartenstein Funeral and Cremation Care
- New Freedom Lions
- New Freedom Restaurant
- Stewartstown Presbyterian Church
- St. John the Baptist Catholic Church
- The Snook Family
- The Long Family

HOPE
Help for Oncology Patients
& Emotional Support
Service that's home



There is a cozy spot every way you turn. And Roses, please check out the Sponsor list at left with pride.

CHATTER BOX

Did you see the Membership Milestones page in the latest WOW® mag?

5 yrs - Kathy M

20 yrs - Jon C

25 yrs - Bernie, Dawn H, Nancy C, John S

(The rest of us are between milestones.)



Marie and the baby turtle are both smiling.

August Turtle News from Marie - they're hatching!

So now when we Turtle Patrollers see signs of emergence (disturbed sand, tracks), we alert Ranger Ann, then do a nest inventory in about 3 days. This involves digging everything up, comparing the data we compiled when we moved the nest to the safe area, figuring out how many hatched, how many didn't. And if there are any live turtles that didn't make it out of the nest, we take them down to the water and let them go.

Such was the case last week — we had 12 volunteers on hand, and discovered that 12 hatchlings didn't make it out of the nest — so we each got to release one. Very cool!

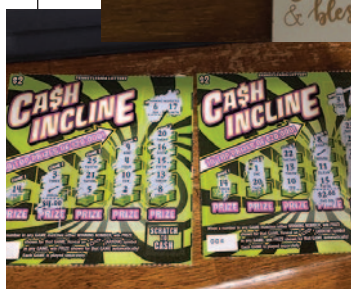
Please submit newsletter items by the
20th of each month to:
suespittle@comcast.net
(as Word.docx – with separate pics, not imbedded)

Secret Sister 2022



Audrey Dawn's dog has a secret sister?! Looks like he got heart-shaped biscuits and a card from Gus the Groundhog that says Keep On Scratchin'!

Sue S's secret sister sent wishes, a certificate to Hallam Restaurant, and gas to ride there!



Paws says Thanks Again for the sentiments and lottery cards. Had a \$6 winner!



2022 Twin Rose Lady Riders Calendar of Events

- Oct 9** **TRLR "Second Sunday Ride"**
 FOO: Lynn will be heading to Chesapeake Inn Restaurant for lunch in Chesapeake City, MD
 MEET: Sheetz in Marietta
 KSU: 10 AM
 Approx 75 miles one way
 If desired, we can walk around town, too.
 **Please RSVP to Lynn if going along**
 Check out: chesapeakeinn.com/menu/dinner/
- Nov 13** **TRLR Indoor Mtg.**
 Loxley's, Centerville exit off 30, Lancaster
 TIME: 11 AM
 Bring ideas for 2023 rides!
- Dec 11** **TRLR Indoor Mtg.**

Bike must be registered and insured to go on WOW® rides.
 Must sign 2022 insurance waiver.
 (see Dawn H or Sue S for a waiver before ride begins)

Please arrive fueled & ready to ride.
 KSU = Kick Stands Up; FOO = First One Out

BOLD listings are Chapter Events.
 (Try to support some of the other clubs' charity runs, too!)

Oct 1	YMC Chicken Pot Pie Dinner, 4-7
Nov 20	YMC Feed, Manchester Fire Hall, 12-3



Advertise Here

1/8 pg. (3.5" w x 2" h - bus. card size)\$20/yr
 1/4 pg. (3.5" w x 4" h)\$35/yr
 1/2 pg. (8" w x 4" h)\$65/yr

For more info contact:
 Sue, Editor at suespittle@comcast.net

Distributed to members and club supporters; posted online for the general public. Will link PDF to a website if requested.
 Advertisers coming on board mid-year will be charged a pro-rated amount for the balance of their first year, then the annual rate the next January when they renew.

Classified ads are free for members.
 Non-members – \$5/mo. or \$10/3 mo.

WANTED:

Fond Memories from Female Riders!

~ The good, the not-so-good, and the crazy. ~
 Ever set your saddle bag on fire?
 Ever inadvertently knock over a row of parked Harleys like dominoes?
 Short or long. Happy endings only, please.
 Send them to the editor by the 20th of each month.
suespittle@comcast.net (Word.docx, pix not imbedded)

ATTN ROSES:

We keep chapter operating costs low but depend on sponsor newsletter ad sales. **Please help to sell ads.**



For more detailed information about the York Motorcycle Club, please visit our website at www.yorkmotorcycle.com or email us at info@yorkmotorcycle.com.

